

PRODUCT GUIDE

Matting & Underfoot Accessories



INDUSTRIAL MATTING



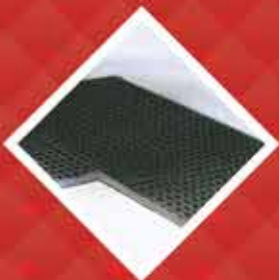
ELECTRICAL MATTING



CATERING & HOSPITALITY
MATTING



OFFICE & COMMERCIAL
ENTRANCE MATTING



MATTING & UNDERFOOT
ACCESSORIES

WWMTM
WORK WELL MATS

Safety and comfort - Begins with the floor you stand on

How to contact us

Phone **1800 246 800**
Fax **1300 763 521**
Email **sales@wwm.net.au**

Our sales office opening hours are 8:00am to 5:00pm
Monday to Friday.

The Work Well Mats' (WWM) sales team is well trained and only too happy to provide technical assistance and guidance to clients when required. Alternatively, send us an email at any time.



Site Surveys

We offer a free site survey throughout Australia. Our experienced sales team will come to your premises and make recommendations to suit your environment and budget. Whether it is product choice or measuring the installation area, we can help.



Logistics

Work Well Mats, with sales offices and warehouse facilities nationwide, can distribute product swiftly throughout Australia. Further, our long-standing relationships with major national freight providers allow us to provide you with the best rates to all regions. With its full range now stocked in both major distribution centres, and by distributors in every state, standard stocked products can be despatched to all areas without delay. The service is prompt, efficient, and only ever a phone call away – experience the WWM difference today!



Customer Service

Work Well Mats is a customer focused business, providing high quality, efficient and reliable service from time of enquiry to after sales support. With support throughout Australia, we provide customers with local support and knowledge. Call our head office for assistance today.



Quality Policy

Quality is at the forefront of Work Well Mats' working practices. With over 15 years of manufacturing to the highest quality standards, the company prides itself on its reputation for implementing strict quality control measures, and strives to supply products that surpass customers expectations. The company works on a policy of 'continuous improvement'.



Environmental Policy

Work Well Mats is conscious of the impact it has on the environment and its associated responsibilities. The company is committed to ensuring its operations satisfy both legal obligations and moral duties. WWM continuously strives to address all green issues to protect the environment from energy reduction to recycling initiatives.

Welcome to **WORK WELL MATS (WWM)**

We are delighted to bring to you the latest collection of Work Well Mats.

As you will notice, we are pleased to introduce many new products to the Work Well Mats range, including a brand new range of Catering and Hospitality products. We have also expanded our product range to the Industrial, Commercial, Floor and boundary marking ranges.

With warehouses and distribution centres throughout Australia, Work Well Mats is the name you can rely on.

A brief history

Work Well Mats is one of the most established names in the manufacture and supply of underfoot safety products and matting throughout Australia.

For over 15 years, the Work Well Mats brand has been regarded as the most extensive range of anti-fatigue industrial safety mats, which is not surprising since the company was one of the first to introduce the concept of industrial 'safety matting' in Australia. Today, Work Well Mats remains amongst the top few importers of safety matting – a position which has been maintained through the continual development of our patented range of exclusive matting products.

Work Well Mats' commitment to our clients remains in our ability and willingness to constantly develop its position in the market as a leader and world-class supplier of rubber and fibreglass solutions through innovation and improvement.

The Work Well Mats today operates from Adelaide, South Australia, with localised sales and warehouse facilities in most other states.



INDUSTRIAL MATTING



ELECTRICAL MATTING



CATERING & HOSPITALITY
MATTING



OFFICE AND COMMERCIAL
ENTRANCE MATTING



MATTING AND UNDERFOOT
ACCESSORIES

CONTENTS

INTRODUCTION

02	Contact Details/Work Well Mats' Policies
03	Welcome to Work Well Mats/ Brief History
04	Contents
06	Application Chart

INDUSTRIAL MATTING

07

- Safety matting
- Anti-fatigue
- Heavy industrial matting



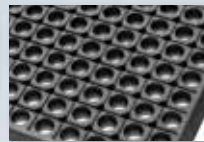
ERGO-TRED
Page 10



EURO-MAT
Page 11



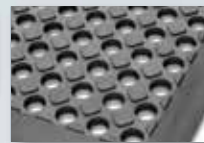
EURO-LOCKER
Page 12



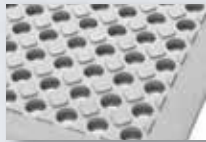
ULTIMAT S & N
Page 13



ULTIMAT GREY
Page 14



OPTI-MAT S & N
Page 15



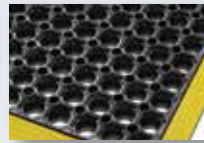
OPTI-MAT GREY
Page 16



DECKLOCK
Page 17



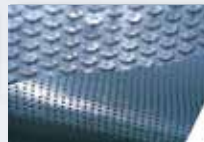
COMFY-GRIP
Page 18



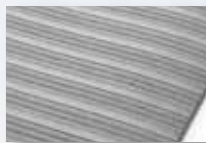
ENGINEERS MAT
Page 19



DURATRED
Page 20



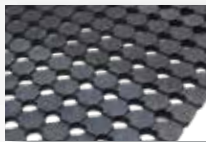
ULTRA-GRIP
Page 21



SOFT STEP
Page 22



COMFY WORX
Page 23



UTILITY MATTING
Page 24

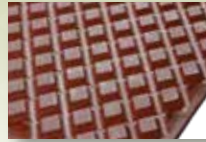


FOOT BATH MAT
Page 25

CATERING AND HOSPITALITY MATTING

26

- Anti-slip
- Anti-fatigue
- Hygienic
- AQS approved



HYGI-MAT
Page 27



KWIK-KLEEN +
Page 28

OFFICE AND COMMERCIAL ENTRANCE MATTING

29

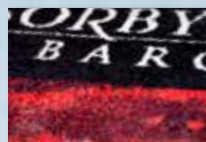
- Internal entrance
- External entrance
- Carpet mats
- Coir mats
- Logo mats
- Chair mats



DIAMOND TREAD
Page 30



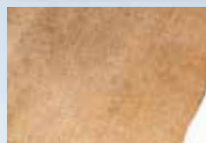
POLY RIB
Page 31



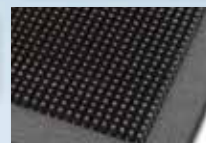
LOGO MAT
Page 32



TACKY TRACK
Page 33



COIR MAT
Page 34



MAXI GUARD
Page 35

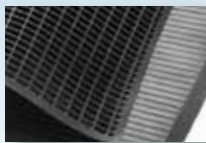


CHAIR MATTING
Page 35

ELECTRICAL MATTING

37

- Conductive mats
- Static mats
- Non-conductive & insulating mats



SWITCHBOARD MATTING
Page 38



SOFT STEP ANTI-STATIC ESD
Page 39

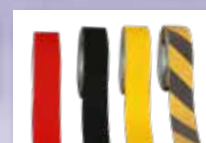
MATTING AND UNDERFOOT ACCESSORIES

40

- Matting accessories
- Mat cleaning
- Floor tapes



RUG LOCK
Page 40



TREADTAPE
Page 41



CLEANING PRODUCTS
Page 41

APPLICATION CHART

Restaurants	Engineering	Dry Welding	Timber Industry	Printing	Laboratories	Beverage	Warehouse	Abattoirs	Meat Rooms	Bakeries	Front Bars	Freezer Rooms	Checkouts	Counter, Postal	Dairy	Oily Manufacture	Mining	Fishing	Vehicle	Internal Entrance	External Entrance
-------------	-------------	-------------	-----------------	----------	--------------	----------	-----------	-----------	------------	----------	------------	---------------	-----------	-----------------	-------	------------------	--------	---------	---------	-------------------	-------------------

INDUSTRIAL MATTING

ERGO-TRED			•	•	•			•						•	•						
EURO-MAT				•	•	•	•	•						•	•		•				
EURO-LOCKER			•	•	•	•	•	•						•	•						
ULTIMAT N		•	•			•	•	•	•	•	•					•	•	•			
ULTIMAT S	•	•	•			•	•	•	•	•	•					•	•	•			
ULTIMAT GREY	•							•	•	•						•	•	•	•		
OPTI-MAT N			•	•	•	•	•				•	•	•	•	•	•		•	•		•
OPTI-MAT S	•	•	•			•	•	•	•	•	•					•		•	•		
OPTI-MAT GREY	•	•						•	•	•						•	•		•		
DECKLOCK		•	•	•			•							•	•						
COMFY-GRIP	•					•	•		•	•						•		•			
ENGINEERS MAT		•	•		•		•										•	•			
DURATRED				•		•								•	•						
ULTRA-GRIP		•	•			•		•				•							•		
SOFT STEP	•				•	•		•				•	•	•							
UTILITY MATTING											•					•			•		

CATERING AND HOSPITALITY MATTING

HYGI-MAT	•					•	•		•	•	•	•			•			•			
KWIN KLEEN +	•					•	•		•	•	•	•	•		•	•		•			

COMMERCIAL AND OFFICE MATTING

DIAMOND TREAD	•				•						•									•	•	
POLYRIB	•				•		•				•									•	•	
LOGO MAT	•																				•	•
TACKY TRACK						•	•	•													•	•
FOOT BATH MAT						•	•		•	•	•				•				•			
COIR MAT	•																				•	•
CHAIR MATTING																						
MAXI GUARD	•					•		•														•

ELECTRICAL MATTING

SWITCH BOARD MATTING		•							•	•								•	•			
SOFT STEP ANTI-STATIC ESO						•							•									

Mats used in wet greasy applications may require scheduled cleaning to ensure optimum performance. Ask your distributor about your application.

All specs E&OE

INDUSTRIAL MATTING

Work Well Mats offers one of the largest selections of industrial safety matting, whether it is to reduce slips in the workplace or to reduce fatigue when standing at a counter, we have it.

OH&S claims are expensive. Anti-fatigue matting is a small price to pay for increased safety.



THE BATTLE AGAINST WORKER FATIGUE

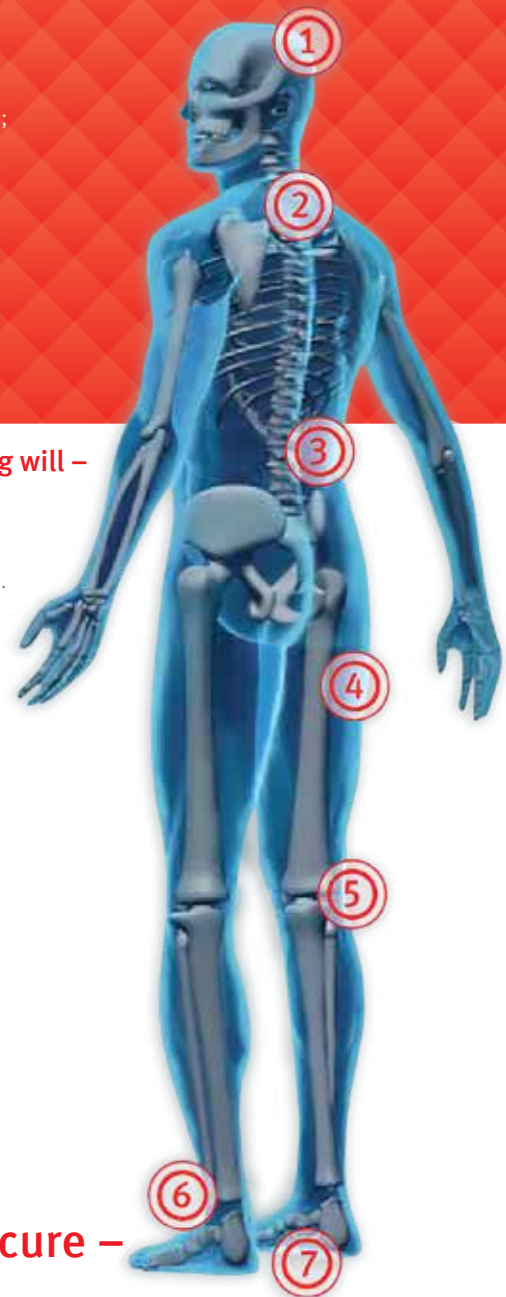
Work Well Mats has over 15 years experience in providing effective solutions to physical fatigue suffered by workers.

Prolonged standing on hard floors causes leg, knee, back and neck problems. Muscles become tired and weary and varicose veins can develop due to restricted blood flow against gravity up through the legs. The pressure of a hard floor can cause stiffness and tension in the back, shoulders and neck. These health hazards can cause lower productivity, poor quality, absenteeism in the workforce and even compensation and insurance costs.

Whether you are:

- standing on a cold industrial floor by a machine or on a production line;
- on a warehouse floor by a despatch or packaging bench;
- in a high tech laboratory research facility; or even
- serving customers at a retail counter...

...we have the answer for your needs.



Research has shown that Work Well Mats Anti-Fatigue Matting will –

1. Increase productivity by stopping fatigue setting in.
2. Ease the stiffness in neck and shoulders which can cause headaches.
3. Reduce the pressure which prolonged standing puts on the spine and strain on the back muscles which commonly gives rise to lower back pain.
4. Halve the amount of energy used up to support muscles in the back and legs.
5. Stimulate circulation guarding against varicose veins which can develop due to restricted blood flow up through the legs.
6. Encourage frequent foot movement as users move their feet more regularly to adapt to underfoot cushioning, assisting healthy blood circulation.
7. Reduce arch and heel pain caused by flattening of the feet.

Be wise; think ahead.

Remember, prevention is better than cure – combat fatigue now!

Safety and comfort - Begins with the floor you stand on



ERGO-TRED



"It has been proven that Ergo-Tred has been effective on our production lines for years." — Production Manager

FEATURES

- Domed surface designed to create a comfortable working environment by reducing strain.
- Air cushioned design relieves stress and increases circulation.
- Designed to reduce worker downtime and increase productivity.
- Heavy-duty construction in quality rubber that will NOT harden over time.
- Custom made to ensure maximum efficiency and comfort within any individual work area.

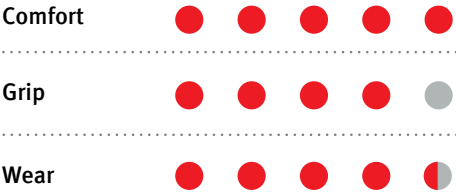


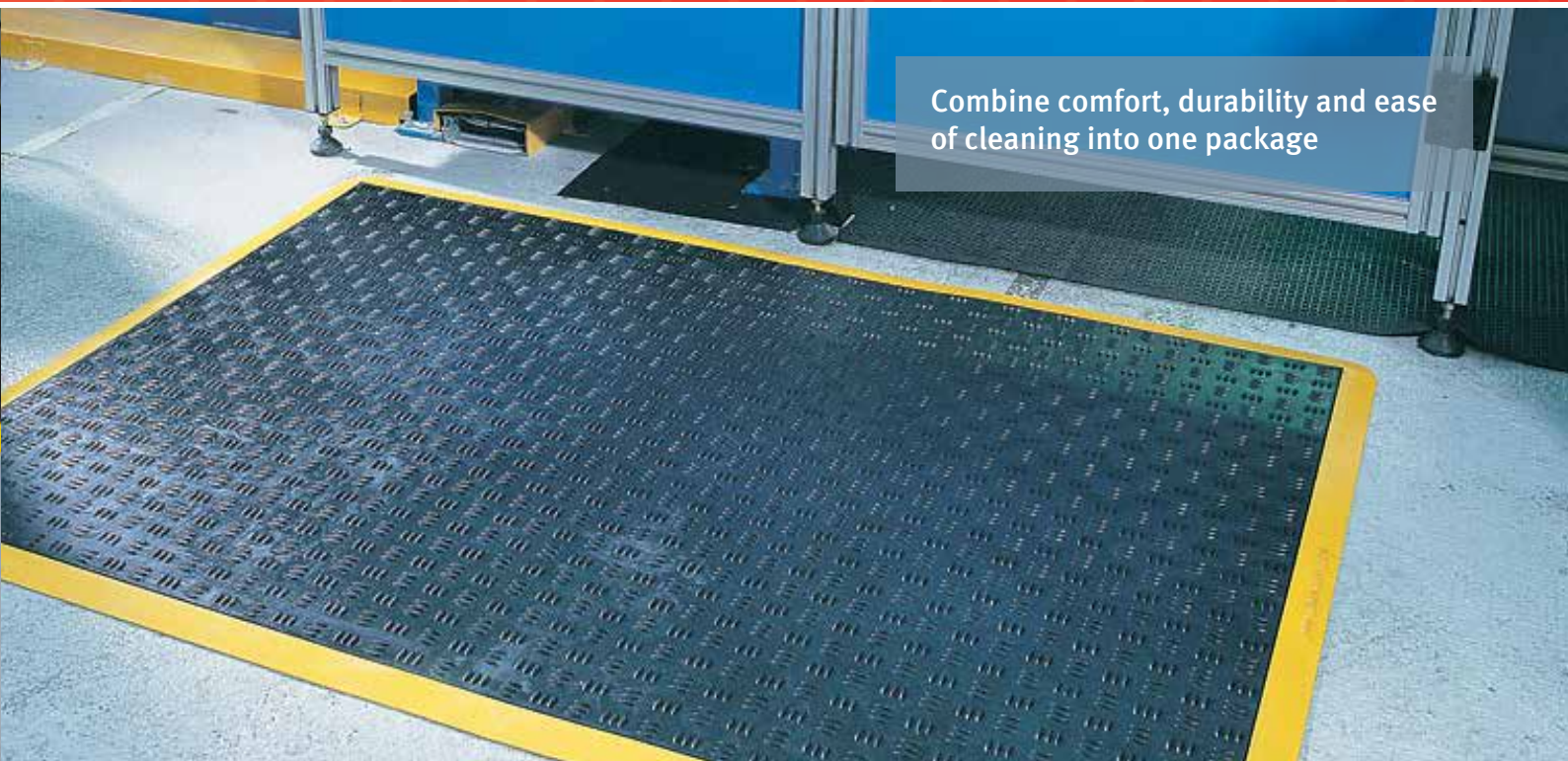
Flexible dome construction, purpose built for optimal worker health, comfort and productivity

SPECIFICATIONS

Warranty	Three year limited warranty
Sizes	0.9 m x 1.2 m standard
	0.9 m runner
	1.2 m runner
	Custom sizes available – contact us on 1800 246 800
Colour	Black with black bevelled edge
	Black with yellow bevelled edge
Safety	Bevelled edges to prevent tripping. Comes as an easy to carry 8 kg unit
Applications	Dry Welding, Timber Industry, Printing, Packaging, Counter Sales and Workshops

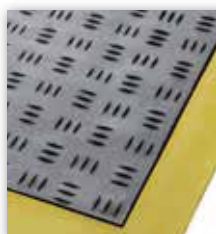
PRODUCT RATING





FEATURES

- Non-slip chequered-plate pattern looks great and offers a non-slip easy to clean surface.
- Heavy-duty rubber with optional grease proof formula that will stand the test of time.
- Underside suction cup design, increases traction to painted and slippery surfaces.
- Flat top design for those who may have identified potential "foot roll".
- Increase worker awareness and productivity.



Non-slip checker plate pattern offers a non-slip, easy to clean surface

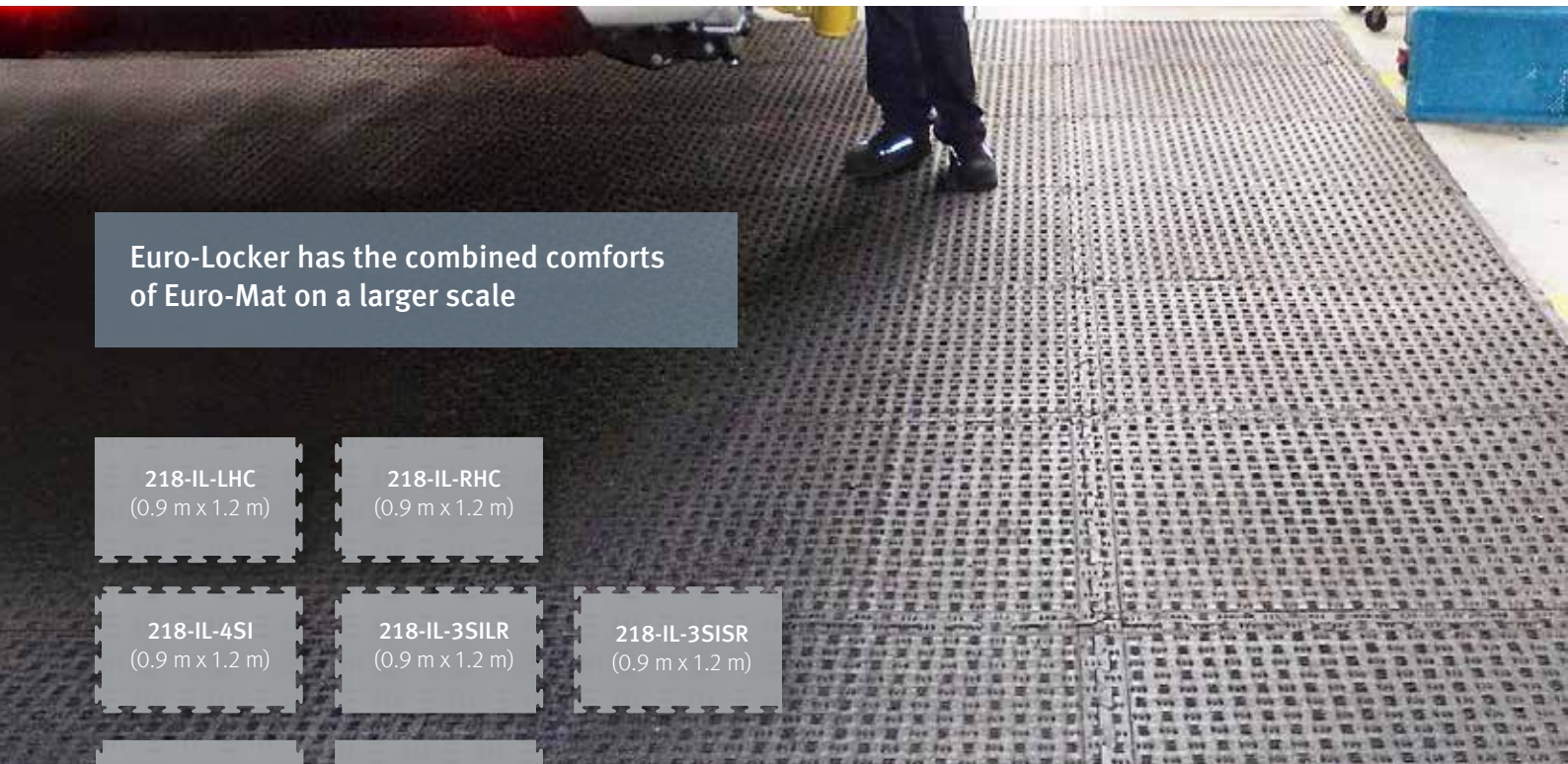
SPECIFICATIONS

Warranty	Three year limited warranty
Sizes	0.9 m x 1.2 m standard 0.9 m runner 1.2 m runner Custom sizes available – contact us on 1800 246 800
Colour	Black with black bevelled edge Black with yellow bevelled edge
Safety	Natural compounded rubber Grease proof nitrile/SBR compound
Applications	Engineering & Maintenance, Abattoirs Printing, Laboratories, Beverage

PRODUCT RATING



EURO-LOCKER



Euro-Locker has the combined comforts of Euro-Mat on a larger scale

218-IL-LHC
(0.9 m x 1.2 m)

218-IL-RHC
(0.9 m x 1.2 m)

218-IL-4SI
(0.9 m x 1.2 m)

218-IL-3SILR
(0.9 m x 1.2 m)

218-IL-3SISR
(0.9 m x 1.2 m)

218-IL-900R
(0.9 m x 1.2 m)

218-IL-900RE
(0.9 m x 1.2 m)

218-IL-1200R
(0.9 m x 1.2 m)

218-IL-1200RE
(0.9 m x 1.2 m)

SPECIFICATIONS

Warranty	Three year limited warranty
Sizes	Custom sizes available - contact us on 1800 246 800
Colour	Standard black. Optional grey or blue as well as yellow borders available on request
Safety	Easier installation achieved with the unique clip together design
Applications	Production Lines, Automotive Industry, Walkways, Abattoirs, Laboratories and Dairy

FEATURES

- User friendly clip together design makes for better manoeuvrability.
- Smooth interlocker joints make for easy sweeping.
- Underside suction cup system is excellent on slippery floors and also provides a cushioning effect.

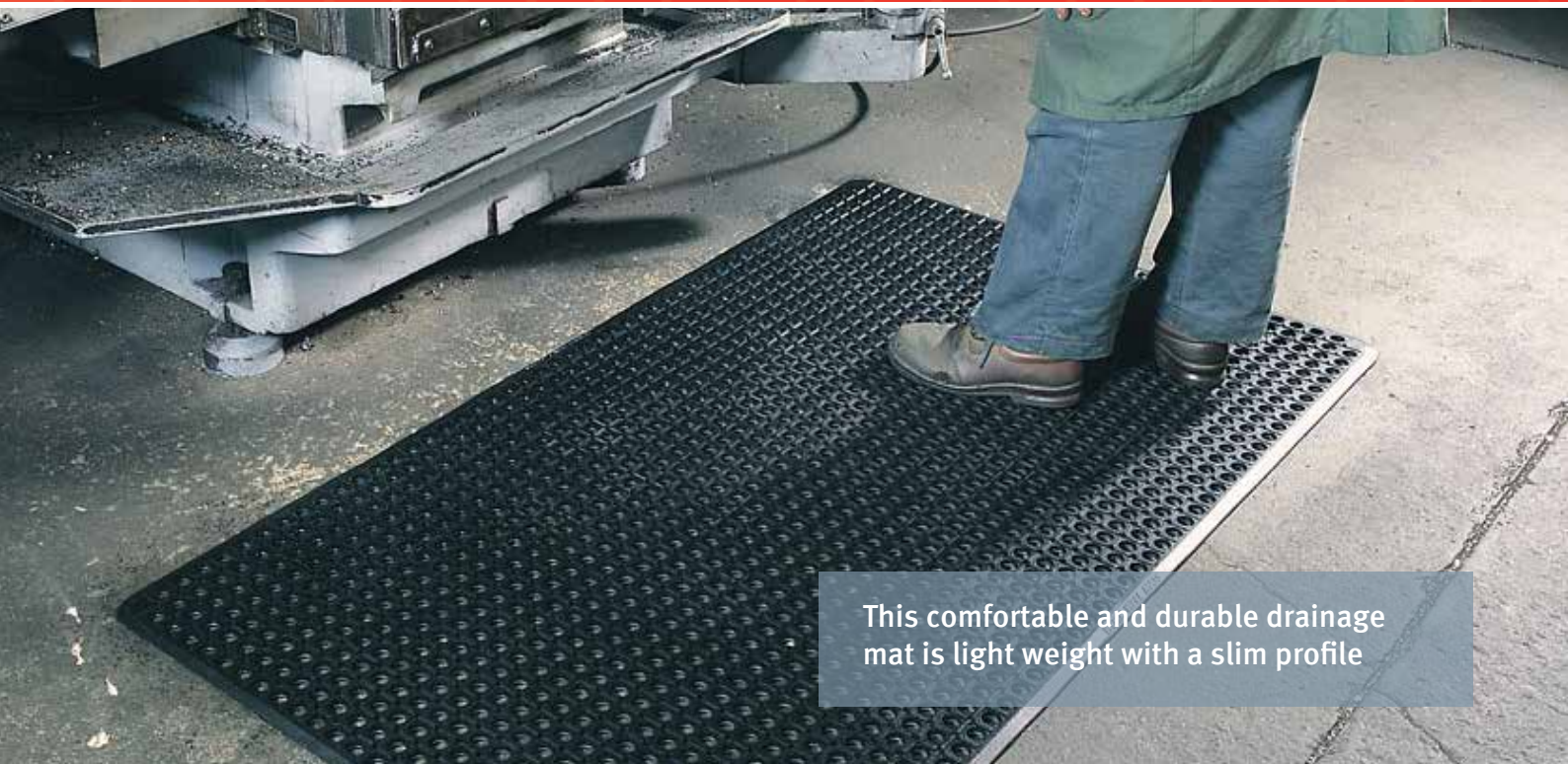


User friendly clip together system makes for better flexibility in layout and design.

PRODUCT RATING



ULTIMAT S & N



This comfortable and durable drainage mat is light weight with a slim profile

FEATURES

- Unique hole design allows for drainage of water and accumulated debris.
- Raised grip points increase traction in oily or wet conditions.
- Unique design reduces down time, increasing profitability.
- Easily cleaned with WWM's specified products. Phone for further assistance.
- Increase worker awareness and productivity.



Unique hole design allows for drainage of accumulated debris

SPECIFICATIONS

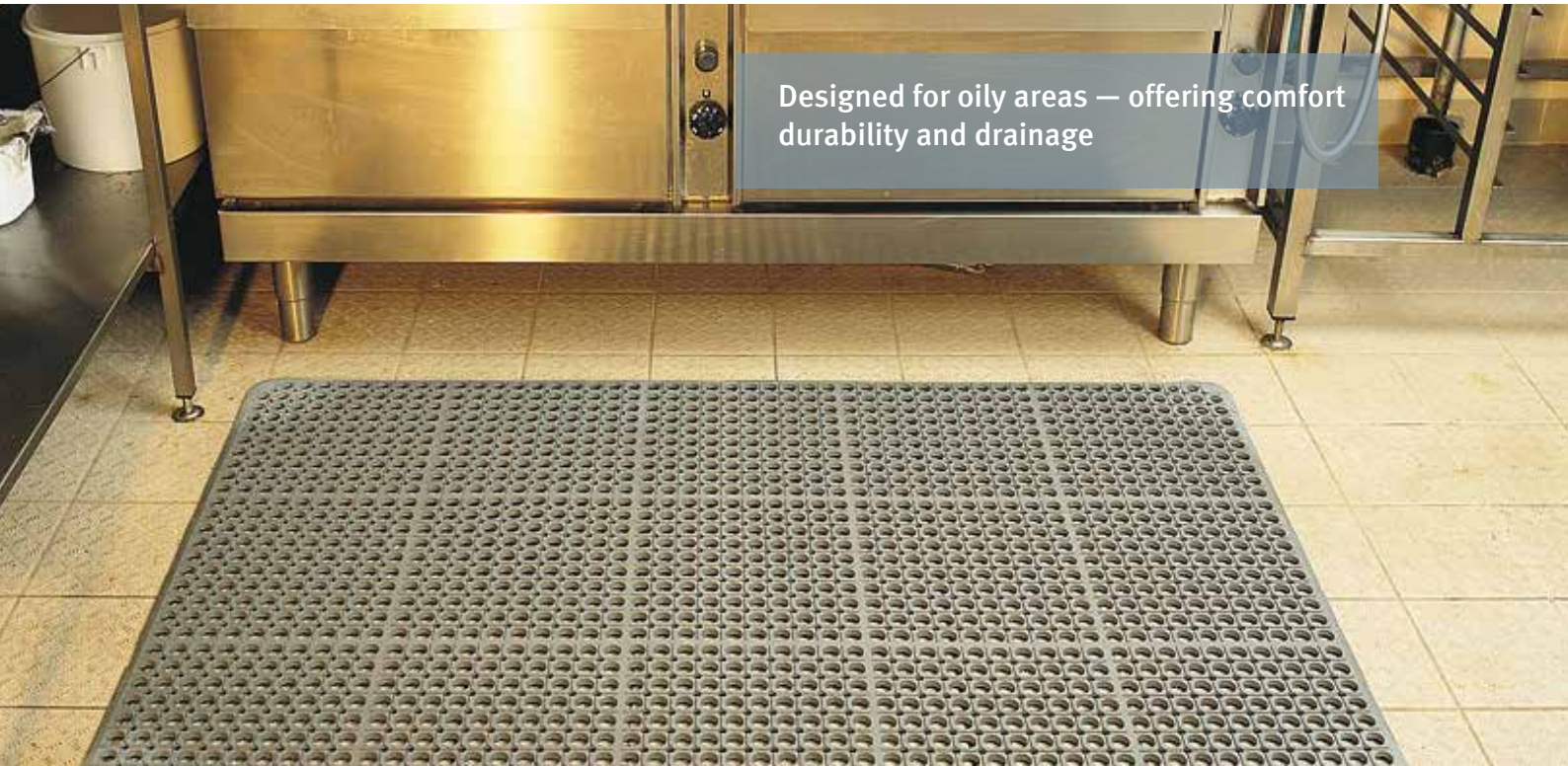
Warranty	Three year limited warranty
Sizes	0.9 m x 1.5 m 0.9 m runner 1.2 m runner Custom sizes available – contact us on 1800 246 800
Colour	Standard black
Formulation	Natural compounded rubber Grease resistant nitrile compound
Applications	Laboratories, Engineering, Ablution Blocks, Wine & Timber Industry, Fishing, Dairy and Printing

PRODUCT RATING

Comfort	● ● ● ● ●
Grip	● ● ● ● ●
Wear	● ● ● ● ●



ULTIMAT GREY



Designed for oily areas — offering comfort durability and drainage

FEATURES

- High quality grease proof formulation increases durability in oily areas.
- Raised design on the surface provided for greater traction in oily conditions.
- No-trip edges on all sides.
- Easy to move product for regular cleaning.
- Profile on underside of mat provides anti-fatigue cushioning and increased mat to floor traction.



Bevelled no-trip edges on all sides prevent costly slips

SPECIFICATIONS

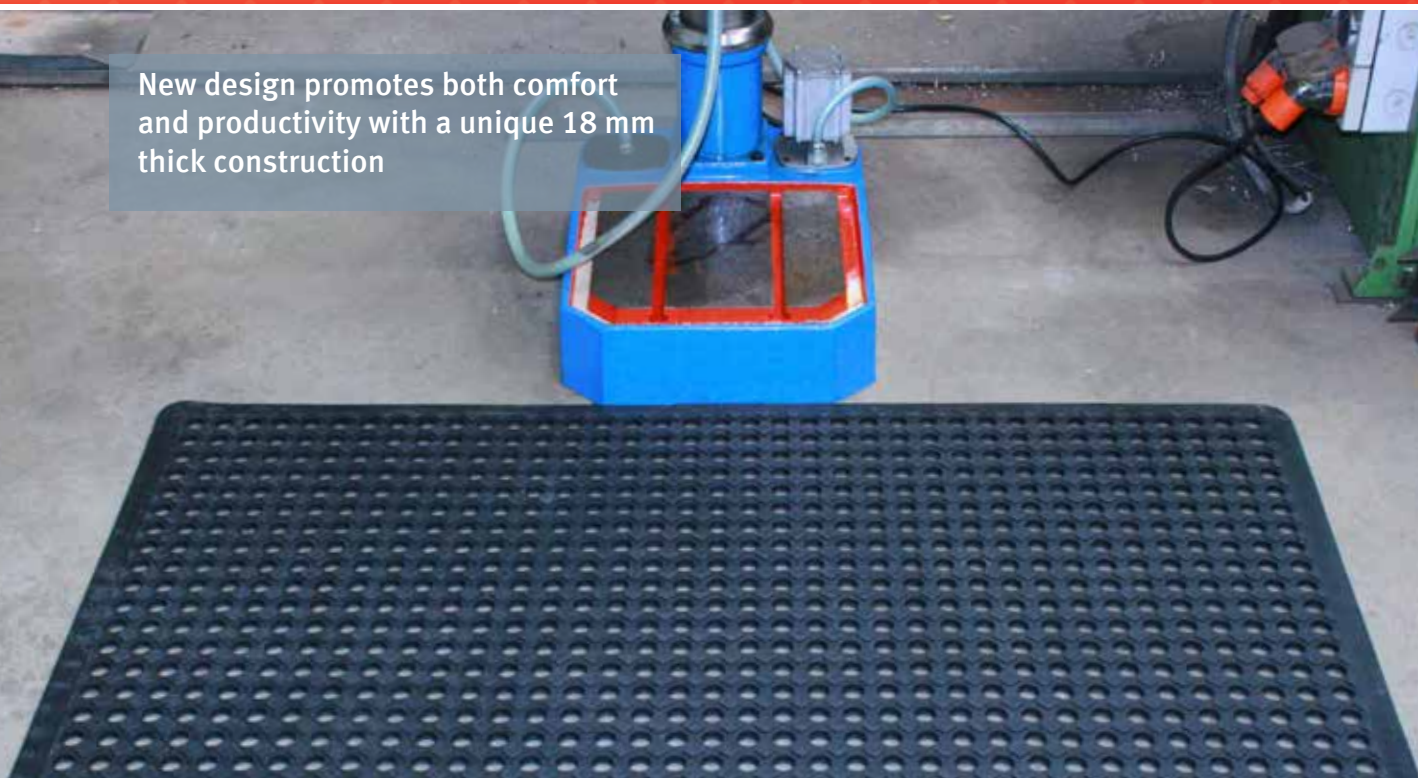
Warranty	Three year limited warranty
Sizes	0.9 m x 1.5 m
	0.9 m runner
	1.2 m runner
	Custom sizes available – contact us on 1800 246 800
Colour	Standard grey
Foundations	Grease proof SBR compound
Applications	Extremely greasy environments, Kitchens with insufficient drainage, Wineries, Fishing and Dairy

PRODUCT RATING



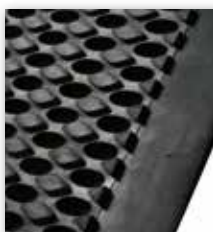
OPTI-MAT S & N

New design promotes both comfort and productivity with a unique 18 mm thick construction



FEATURES

- Specialised rubber formulation offers the ultimate solution with a light and easy to handle product.
- Directional drainage grooves remove water and grease, making for a safer environment.
- No holes or cavities to trap bacteria.
- Meets relevant food grade standards. Phone for further assistance.
- Specialised Nitrile construction ensures maximum grease resistance.



Slip-free raised surface provides an ideal solution to greasy conditions

SPECIFICATIONS

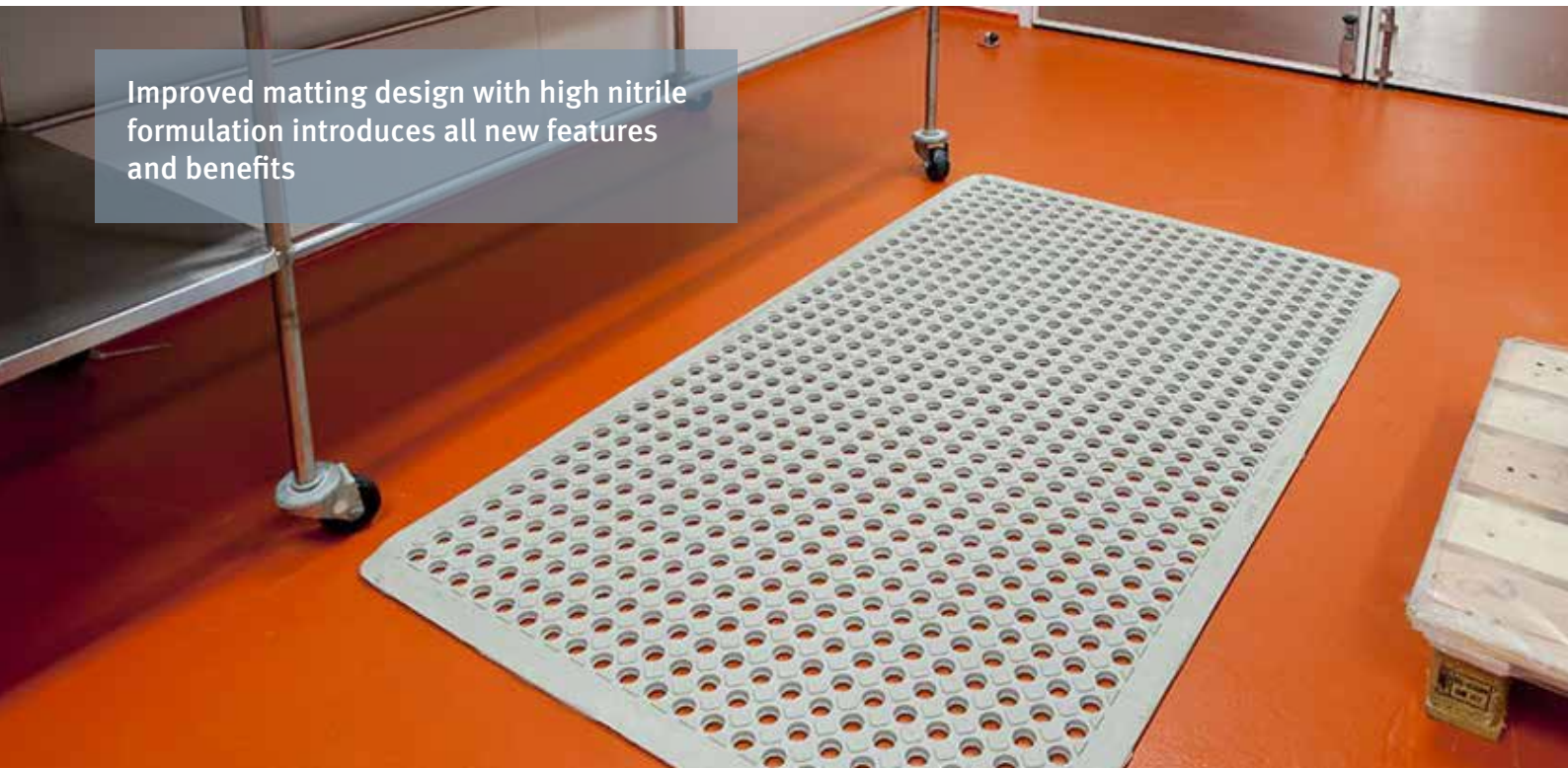
Warranty	Three year limited warranty
Sizes	0.9m x 1.5m 0.9m runner 1.5m runner Custom sizes available – contact us on 1800 246 800
Colour	Standard black
Formulation	Natural compounded rubber Grease resistant nitrile compound
Applications	Engineering Environments, Wineries, Restaurants and Food Processing

PRODUCT RATING



OPTI-MAT GREY

Improved matting design with high nitrile formulation introduces all new features and benefits



FEATURES

- High quality grease proof formulation increases durability in oily areas.
- Raised design on the surface provided for greater traction in oily conditions.
- No-trip edges on all sides.
- Easy to move product for regular cleaning.
- Profile on underside of mat provides anti-fatigue cushioning and increased mat to floor traction.

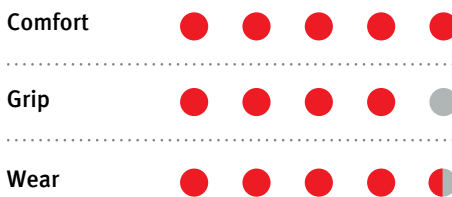


Directional drainage grooves remove water and grease, making for a safer environment

SPECIFICATIONS

Warranty	Three year limited warranty
Sizes	0.9m x 1.5m 0.9m runner 1.5m runner Custom sizes available – contact us on 1800 246 800
Colour	Standard grey
Foundations	Grease proof SBR compound
Applications	Oily Industrial Environments, Abattoirs, Dairy, Kitchens, Wineries, Fishing and Dairy

PRODUCT RATING

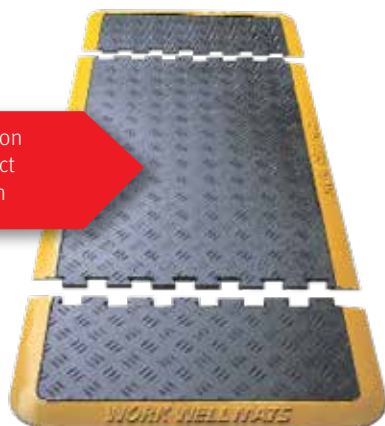


Modular interlocking runner provides maximum safety, visibility and comfort

FEATURES

- Non-directional chequered-plate surface provides ultimate grip.
- Underside moulded rubber air pockets make Decklock a comfortable yet cost effective alternative.
- Two piece configuration makes construction of long length products achievable.
- Narrow construction make this product ideal for walkways.
- Large bevelled edge eliminates slips, trips and falls.

Two piece configuration allows you to construct a runner of any length



SPECIFICATIONS

Warranty	Three year limited warranty
Sizes	Centres 0.71 m x 1.0 m Ends – 0.71 m x 0.3 m
Colour	Black with a yellow or black border
Safety	Easy clip together system using light manoeuvrable panels. Large 50 mm yellow bevelled ramp
Applications	Dry Applications, Workshops, Counter Areas, Production Lines

PRODUCT RATING

Comfort	● ● ● ● ●
Grip	● ● ● ● ●
Wear	● ● ● ● ●



COMFY-GRIP

"We can't get enough of this product"
 – Victorian Distributor



FEATURES

- Stud pattern provides an ideal non-slip surface for applications where grease and water are present.
- Special suction cup design provides an excellent solution to slippery floors and provides a cushioning effect.
- Uniquely designed bevelled edge ensures maximum drainage and removal of unwanted spills.



Ideal non-slip surface for applications where grease and water is present.

SPECIFICATIONS

Warranty	Three year limited warranty
Sizes	0.9 m x 1.2 m standard 0.9 m runner 1.2 m runner Custom sizes available – contact us on 1800 246 800
Colour	Black with yellow bevelled edge
Foundations	Grease proof SBR compound
Applications	Laboratories, Beverage Industry, Abattoirs and Offshore

PRODUCT RATING



ENGINEERS MAT

The ultimate heavy-duty anti-fatigue comfort in the workplace



FEATURES

- Elevated rib design provides maximum traction reducing 'time off injuries'.
- Large hole gives good drainage and allows swarf and weld spatter to fall through.
- 25 mm thick heavy-duty abrasion resistant rubber.
- Heavy-duty design aims to keep your plant cleaner and safer.
- Large 50 mm yellow safety bevelled edge provides a visible non-slip edge.



Elevated rib design provides maximum traction reducing 'time off injuries.'

SPECIFICATIONS

Warranty	Three year limited warranty
Sizes	1.05 m x 1.55 m 1.05 m runner 1.55 m runner Custom sizes available – contact us on 1800 246 800
Colour	Black without bevelled edge Black with yellow bevelled edge
Formulation	Natural compounded rubber
Applications	Heavy Industry, Mining, Beverage, Engineering and Heavy Welding

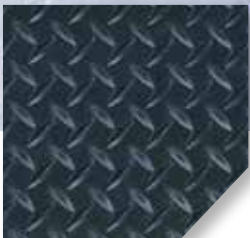
PRODUCT RATING

Comfort	● ● ● ● ●
Grip	● ● ● ● ●
Wear	● ● ● ● ●



DURATRED

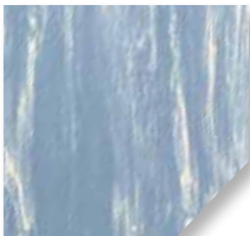
The ultimate anti-fatigue comfort in the workplace



BLACK CHECKER-PLATE



YELLOW BORDER CHECKER-PLATE



BLUE MARBLE



WHITE MARBLE

FEATURES

- Chequered-plate pattern gives great visual appearance and offers an ultimate anti-slip surface.
- Slight gradient safety bevelled edges.
- Aerated Foam provides a soft but firm footing that gives increased performance to the user.
- 16 mm overall thickness, also available in 12 mm.

SPECIFICATIONS

Warranty	Three year limited warranty
Sizes	0.6 m x 0.9 m, 0.9 m x 1.5 m 0.6 m runner, 0.9 m runner, 1.2 m runner Custom sizes available – contact us on 1800 246 800
Colour	See colour swatches adjacent
Construction	Low density foam makes lifting easy. Also available in static dissipative material.
Applications	Checkout areas, Laboratories, Hazardous, substance testing areas

PRODUCT RATING

Comfort	● ● ● ● ●
Grip	● ● ● ● ●
Wear	● ● ● ● ●

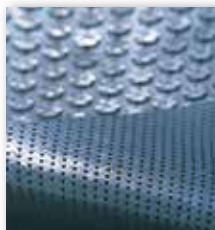


The ultimate anti-slip mat for all slippery areas



FEATURES

- Unique clean patterned face provides maximum grip and eliminates costly falls.
- Dimpled underside grips the floor even on slopes or in oily conditions.
- 4 mm solid rubber compound provides heavy-duty construction.
- Specialised nitrile construction designed to be low profile yet tough.
- Low profile construction allows uninterrupted trolley traffic.



Unique cleat patterned face provides maximum grip and eliminates costly falls

SPECIFICATIONS

Warranty	Three year limited warranty
Sizes	0.9m x 1.5m 0.9m runner 1.5m runner Custom sizes available – contact us on 1800 246 800
Colour	Standard black. Refer to Comfy Grip if yellow border is required.
Formulation	Grease-resistant nitrile/SBR compound
Applications	Freezer Rooms, Abattoirs and Laboratories

PRODUCT RATING

Comfort	● ● ● ● ●
Grip	● ● ● ● ●
Wear	● ● ● ● ●



SOFT STEP



The most economical anti-fatigue solution

FEATURES

- All round bevelled edges for your safety – can be fitted with yellow border. Cleans easily with a mop, broom or hose.
- Optional static dissipative material makes Soft Step ideal for electronic or hazardous areas.
- Insulates your feet against cold concrete floors.

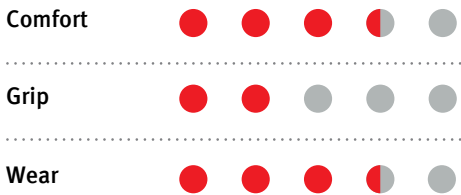


All round bevelled edges for your safety – can be fitted with yellow border

SPECIFICATIONS

Warranty	Three year limited warranty
Sizes	0.9 m runner For ESD sizes (Electrostatic Dissipative) – contact us on 1800 246 800
Colour	Standard grey
Surface	Ribbed Pebbled
Applications	Retail Counters, Laboratories, Test Benches, Electronics Manufacturing

PRODUCT RATING



Ensure the right balance to delay fatigue experienced from long standing



FEATURES

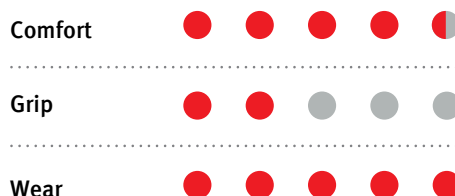
- Carefully designed to find the right balance between cushioning and foot support
- Aerated high tech foam provides a soft but firm footing that gives increased performance to the user.
- 19 mm overall thickness.
- Aids in delaying the onset of fatigue experienced from standing on hard floor surfaces.
- Handy size and weight for ease of handling.
- Slight gradient safety bevelled edges.

SPECIFICATIONS

Warranty	Five year limited warranty
Sizes	0.5 X 1m 0.9 X 1.8m
Colour	Standard black
Formulation	Low density polyurethane foam makes lifting easy.
Applications	Checkout areas, production lines, work stations

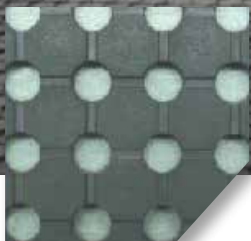
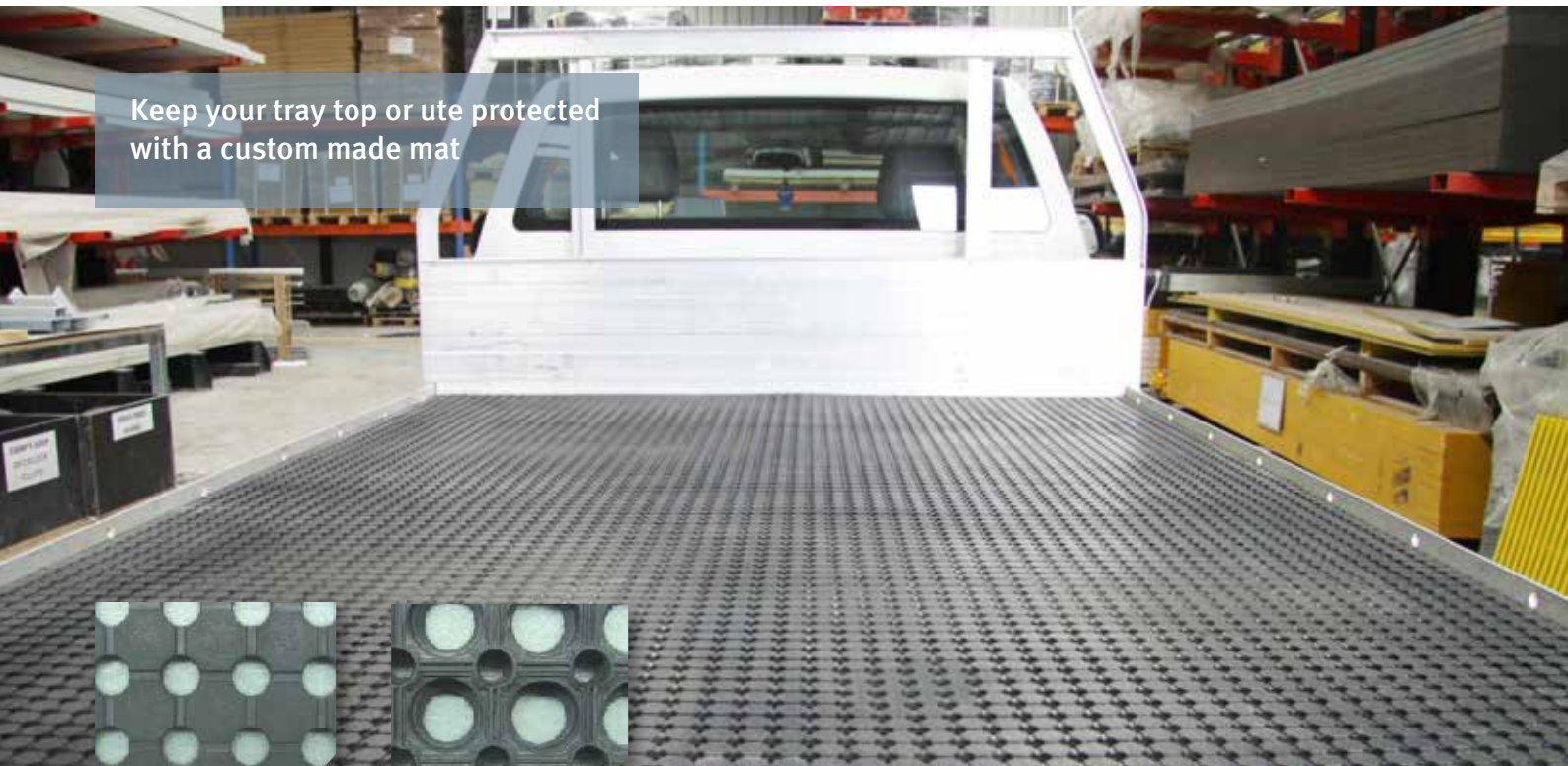
Ideal for behind counters and supermarkets where long standing is required

PRODUCT RATING

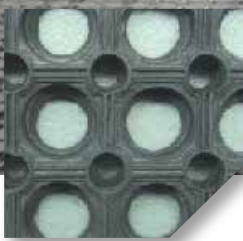


UTILITY MATTING

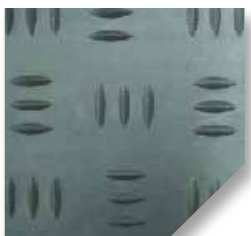
Keep your tray top or ute protected with a custom made mat



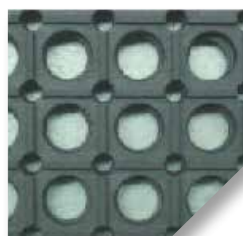
STANDARD



ENGINEERS MAT



EURO-MAT



ULTIMAT

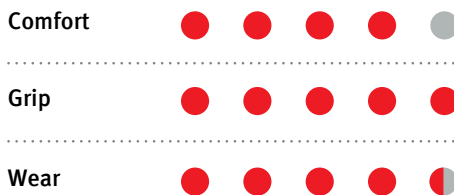
SPECIFICATIONS

Warranty	One year limited warranty
Sizes	Most sizes for current models are available Custom sizes available – contact us on 1800 246 800
Colour	Standard black
Applications	Utes, Truck Trays and Trailers

FEATURES

- Protects the surface of your vehicle as well as the goods that you carry.
- Custom made to suit any shape.
- Eliminates sliding and movement of goods.
- Various configurations available to suit your requirements.

PRODUCT RATING



FOOT BATH MAT

The ultimate in sanitisation, coupled with convenience



FEATURES

- High ramp edges designed to contain anti-microbial or any sanitising chemical solutions for boot dipping.
- Yellow bevelled edges enhance visibility and safety whilst increasing awareness that boot dip is required.
- Base of boot dip boasts hundreds of rubber bristles which trap dirt and grit whilst encouraging sanitation of grip on the underside of shoes and boots.



High ramp edges designed to contain anti-microbial or any sanitising chemical solutions for boot dipping



RELATED PRODUCT SANI-PLUS

Excellent foot wash solution, ideal for the food industry.

SPECIFICATIONS

Warranty	One year limited warranty
Sizes	0.98 m x 0.81 m x 0.48 m deep
Colour	Black with yellow bevelled edges
Formulation	Natural compounded rubber Grease proof nitrile/SBR compound
Applications	Dairies, Abattoirs, Food Manufacturing and Healthcare

PRODUCT RATING

Performance ● ● ● ● ●

Wear ● ● ● ● ●



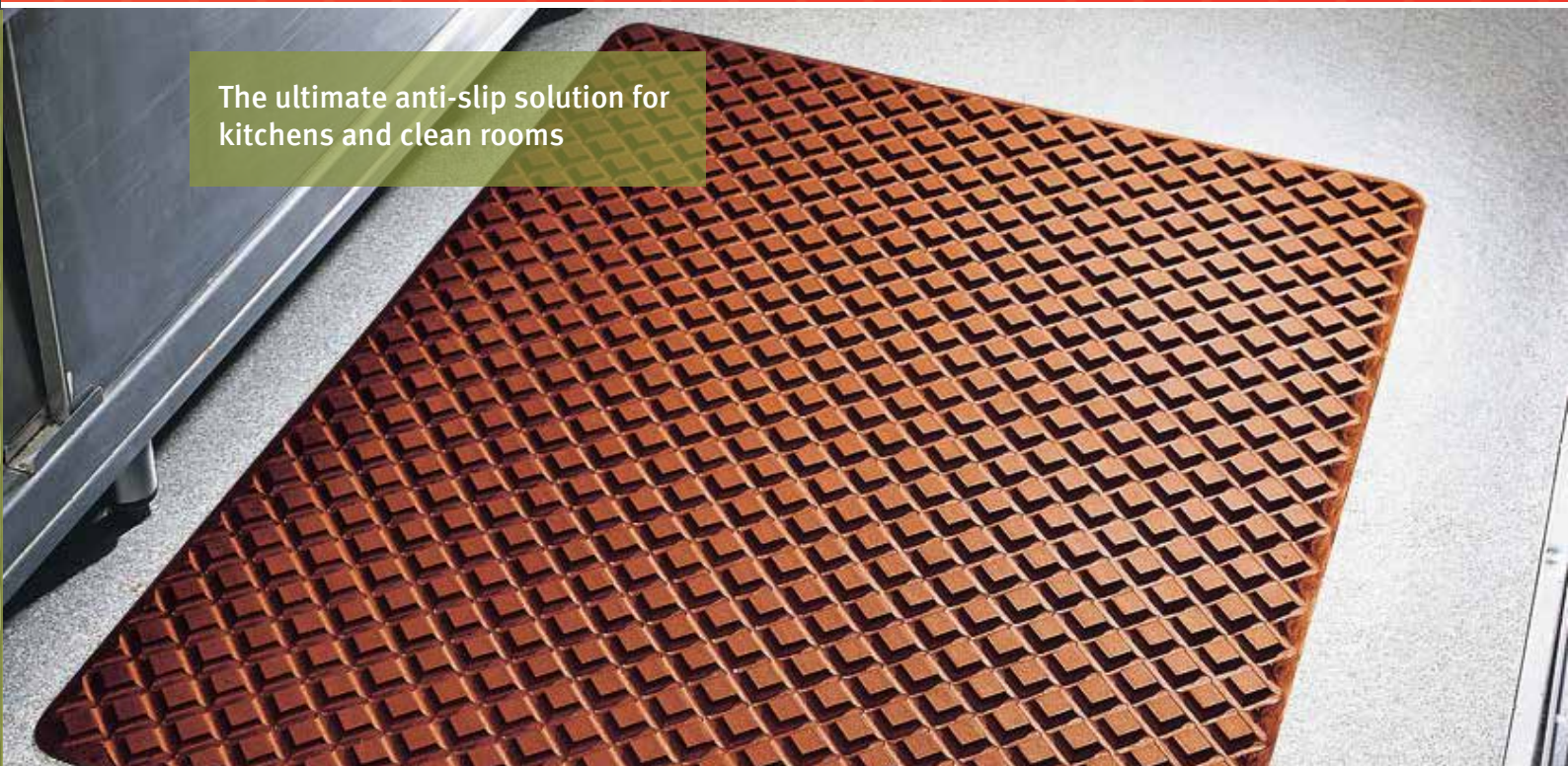
CATERING & HOSPITALITY MATTING

Work Well Mats has a range of anti-fatigue safety matting designed specifically for bars, kitchens and food processing environments that is second to none.

Work Well Mats' exclusive range includes AQIS approved mats, as well as extremely lightweight mats for ease of cleaning.

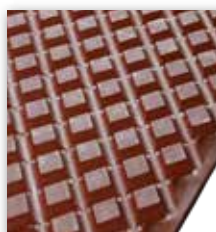


The ultimate anti-slip solution for kitchens and clean rooms



FEATURES

- Superior matrix design allows drainage of water, oil and general debris.
- 50 mm enlarged ramp reduces slips, trips and falls.
- Underside suction cup profile provides anti-fatigue cushioning and holds mat firmly in place.
- Highly formulated rubber stops hardening and cracking over time.
- Uniquely designed for ease of cleaning.



Underside suction cup profile provides anti-fatigue cushioning and holds mat firmly in place

SPECIFICATIONS

Warranty	Three year limited warranty
Sizes	0.9 m x 1.5 m standard 0.9 m runner 1.2 m runner Custom sizes available – contact us on 1800 246 800
Colour	Black grease-resistant Terracotta grease proof
Formulation	Natural grease-resistant rubber Grease proof nitrile/SBR compound
Applications	Wineries, Restaurants and Food Processing

PRODUCT RATING

Comfort	● ● ● ● ●
Grip	● ● ● ● ●
Wear	● ● ● ● ●



KWIK-KLEEN +



Lightweight, grease proof and anti-slip – the ultimate combination for restaurants

FEATURES

- Closed cell sponge rubber construction provides an excellent solution to fatigue.
- Hygienic anti-microbial agent properties inhibit growth of bacteria – this impregnated agent cannot rub off or stain, and will withstand the rigours of industrial cleaning.
- Raised texture ‘crisscross’ grip surface provides excellent slip resistance.
- Ideally located drainage orifices provide a perfect underfoot anti-slip product for commercial food preparation areas and kitchens.
- Lightweight construction allows for ease of handling, cleaning and moving.
- Mats can be commercially laundered or simply washed with just hot soapy water – no need to bother with chlorine any longer.
- Lightweight construction allows for ease of handling, cleaning and moving.



Closed cell sponge rubber construction provides an excellent solution to fatigue

SPECIFICATIONS

Warranty	Three year limited warranty
Sizes	0.9 m x 1.5 m
	0.9 m runner
	1.5 m runner
	Custom sizes available – contact us on 1800 246 800
Colour	Standard black
Foundations	Natural compounded rubber
	Grease-resistant nitrile compound
Applications	Kitchens, Bars and Dishwasher Areas

PRODUCT RATING





OFFICE & COMMERCIAL ENTRANCE MATTING

Keen to improve the first impression of your entrance, or protect your carpet?

From heavy-duty entrance matting to commercial grade chair matting, Work Well Mats' comprehensive range offers logical functionality.



DIAMOND TREAD

Enhance the image of your entrance – the instant corporate feel



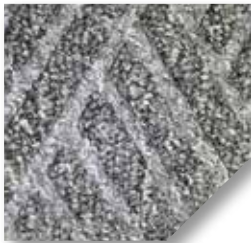
GREEN



BLUE



BROWN



GREY

FEATURES

- Unique 'Water Dam' edge traps dirt and water, preventing grime from being carried inside.
- Rubber backed product designed to provide extra wear and tear in high traffic areas.
- Easy to clean product, with cleaning accessories available.
- Four smart prestigious colours designed to enhance the image of your entrance.

SPECIFICATIONS

Warranty	Three year limited warranty
Sizes	<p>Standard 0.6 m x 0.9 m, 0.9 m x 1.5 m, 1.2 m x 1.8 m</p> <p>Runner widths 0.9 m, 1.2 m, 1.8 m</p> <p>Custom sizes available – contact us on 1800 246 800</p>
Colour	Available in green, blue, brown and grey. Contact us for swatches – 1800 246 800
Construction	Heavy-duty multi denier yarn construction
Applications	Main internal entrances and passageways

PRODUCT RATING

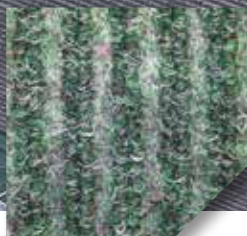
Comfort	● ● ● ● ●
Grip	● ● ● ● ●
Wear	● ● ● ● ●



The ultimate executive style entrance mat that upholds your corporate appearance



GREY



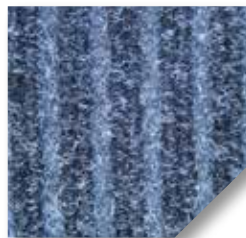
GREEN



CHARCOAL



BROWN



BLUE



BURGUNDY

PRODUCT RATING

Aesthetics ● ● ● ● ●

Grip ● ● ● ● ●

Wear ● ● ● ● ●

FEATURES

- Heavy-duty corporate looking product that provides an economic upgrade for your entrance with a small nitrile defined border.
- Rubber backing to prevent movement on carpeted surfaces.
- Unique construction traps water and dirt caused by heavy traffic and inclement weather.
- Can be tailored to suit existing floor recesses.
- Easy to clean and lightweight.

SPECIFICATIONS

Warranty	One year limited warranty
Sizes	Standard 0.6 m x 0.9 m, 0.9 m x 1.5 m, 1.2 m x 1.8 m
	Runner widths – 0.9 m, 1.2 m, 1.8 m
	Custom sizes available – contact us on 1800 246 800
Colour	See adjacent colour chart – contact us on 1800 246 800 for swatches
Construction	Heavy denier polypropylene needle punched material that absorbs water



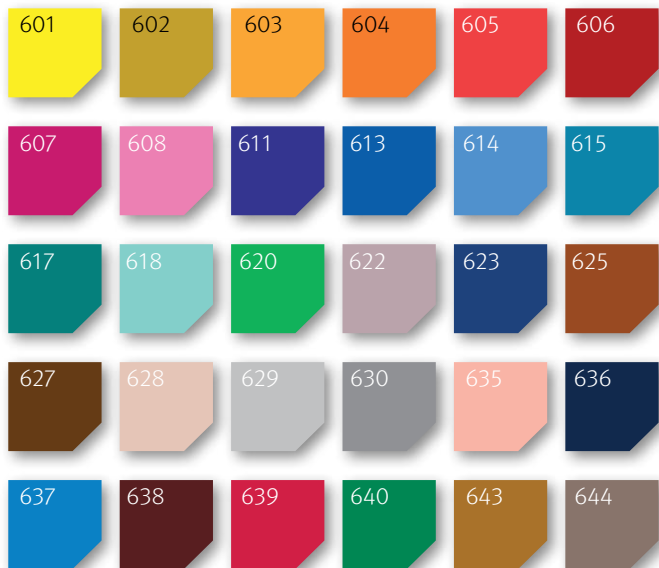
LOGO MAT



Make a great and lasting impression with a mat printed with your logo

FEATURES

- Enhance the first impression of your company with floor protection with Work Well Mats' 100% custom Logo Mats.
- Experience WWM's second to none turnaround time with your Logo Mat – even if you only require a single mat.
- Choose up to 8 colours from our huge 30 colour palette to 'show your true colours'.
- We offer in-house graphic design – all that we require is an electronic copy of what you are seeking to promote and basic instructions about what you are seeking to achieve.
- Tough nitrile rubber backing ensures 100% resistance to oil and grease and that no slipping will occur.
- Heat-set nylon pile traps dirt better than standard alternatives and makes for a longer performance life.
- Unique WWM printing process makes for eye catching definition and visual clarity.



Colour choices

Please note the colours displayed are intended to be a fair description and are for illustration purposes only.



Unique WWM printing makes for eye catching definition and visual clarity

SPECIFICATIONS

Sizes	0.85 m x 1.2 m, 1.5 m x 2.4 m
	Custom sizes available – 1.8 m x 6 m (maximum custom size) – contact us on 1800 246 800



Contamination control; the ultimate economical solution where hygiene is imperative

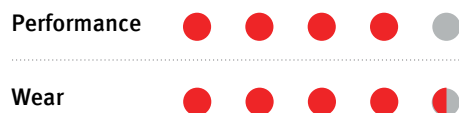
FEATURES

- The tacky surface of Tacky Trak clean room mats effectively removes any dirt and dust from shoes and castors, eliminating the chance of contaminants in clean room environments.
- Unique design ensures all dirt and dust trapped is contained – simply remove and discard the top film once contaminated completely.
- Effective and easy to use, each Tacky Trak pad has 60 layers of a tough film laminated together in a stack.
- Clean room Tacky Trak mats offer economical dirt control for low-profile carpet, tile or concrete surfaces.
- Various size frames are available for use with the Tacky Trak mat and provide an excellent means of placing these mats in positions where they must be walked over before entry to the clean room environment can be gained.
- Each box or case consists of 10 pads, where each layer is numbered.

SPECIFICATIONS

Sizes	0.6 m x 0.9 m
	0.9 m x 1.14 m
Colour	Standard Blue
Applications	Electronics Manufacture, Clean Rooms, Dust Free Environments, Hospitals, Laboratories and other sterile environments.

PRODUCT RATING



Each Tacky Trak pad has 60 numbered layers of a tough film laminated together in a stack

COIR MAT



Economical solution for any office or commercial space

FEATURES

- High quality coir design ensures value for money whilst adhering to the highest of standards.
- Makes dirt removal easy compared to alternative thinner products.
- Installation of mat and recess can be arranged on request.

SPECIFICATIONS

Warranty	One year limited warranty
Construction	Natural/UV stable rubber compound
Sizes	2 m x any length Depth 30 mm, 23 mm, 17 mm



Coir mat is available as a roll or cut to size

PRODUCT RATING

Grip	● ● ● ● ●
Wear	● ● ● ● ●
Aesthetics	● ● ● ● ●



MAXI GUARD



Effective entrance cleaner

FEATURES

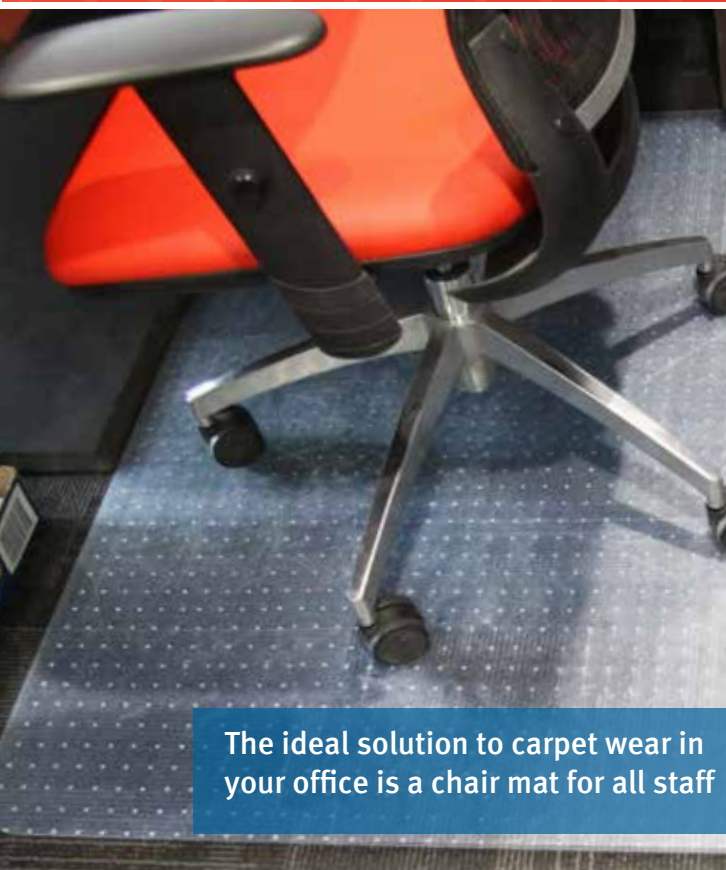
- Rubber effectively scrubs shoes clean.
- Large 'no-trip' border designed to hold dirt, dust and up to 2 litres of water.

SPECIFICATIONS

Warranty	One year limited warranty
Formulation	Natural/UV stable rubber compound
Sizes	Small 0.6 m x 0.9 m Medium 0.88 m x 0.99 m Large 0.9 m x 1.8 m



CHAIR MATTING



The ideal solution to carpet wear in your office is a chair mat for all staff

FEATURES

- Castor chairs slide with ease across the surface making it easier to work at your desk and move about while seated.
- Optional without carpet pins, enabling use in vinyl areas.
- Special keyed design enables foot area under desk to be covered.
- Saves replacing carpet.

SPECIFICATIONS

Warranty	One year limited warranty
Formulation	UV Stable PVC
Sizes	Diplomat – 1.5 m x 1.2 m, Executive – 1.52 m x 1.17 m, Secretary – 1.22 m x 0.915 m

Diplomat

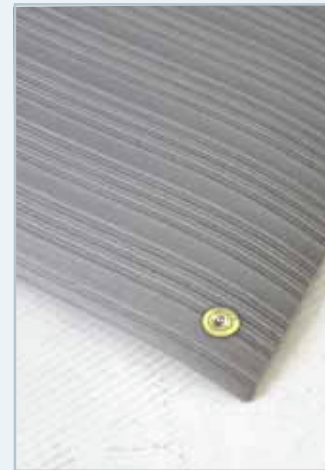
Executive

Secretary



CONDUCTIVE & STATIC DISSIPATIVE

- Designed to protect sensitive equipment by draining static electricity from workers before they come in contact with susceptible equipment or chemicals.
- Necessary in sensitive applications as even one discharge could destroy a computer or cause fire to ignite in the case of chemicals or liquids; and because personnel walking or moving in a chair fitted with castors very quickly gather static electricity.
- Electrically Conductive mats disperse static electricity quicker than Static Dissipative mats, meaning Electrically Conductive matting are more commonly used around highly sensitive equipment or components.
- It is recommended that Conductive and Dissipative matting be grounded for maximum effectiveness.



NON-CONDUCTIVE & INSULATING

- Designed to insulate workers, protecting them from deadly shocks generated by high voltage equipment.
- Work Well Mats' Non-Conductive and Insulating mats are tested and proven to have high dielectric strength, and recommended where voltage exposure is present to ensure workers remain safe.
- Insulating matting is a true safety matting solution designed to save people's lives.



ELECTRICAL MATTING ACCESSORIES



SNAP KIT

Easily and quickly installed with a screw driver.



GROUNDING CHORD

A convenient plug for earthing to mains ground. Complete with earth screw to accept ring terminals.



EARTH PLUG

A popular method of grounding mats in a simple manner. Simply plug into the stud on a mat.

ELECTRICAL MATTING

The Work Well Mats' range of electrical matting includes both conductive and resistant matting, as well as a selection of accessories designed to protect operators and components from the effects of electrical currents.



SWITCHBOARD MATTING

Are your people safe where safety counts?



FEATURES

- Designed to insulate workers, protecting them from deadly shocks generated by high voltage equipment.
- Work Well Mats' Non-Conductive and Insulating mats are tested and proven to have high dielectric strength; and recommended where voltage exposure is conservative to ensure workers remain safe.
- Insulating matting is a true safety matting solution designed to save people's lives.



Insulating matting is a true safety matting solution designed to save people's lives

SPECIFICATIONS

Sizes	0.9 m runner (runner roll 0.9 m x 22.8 m) Custom sizes available – contact us on 1800 246 800
Colour	Standard black
Recommended Exposure	17,000 volts (VAC)
Applications	In front of switchboards

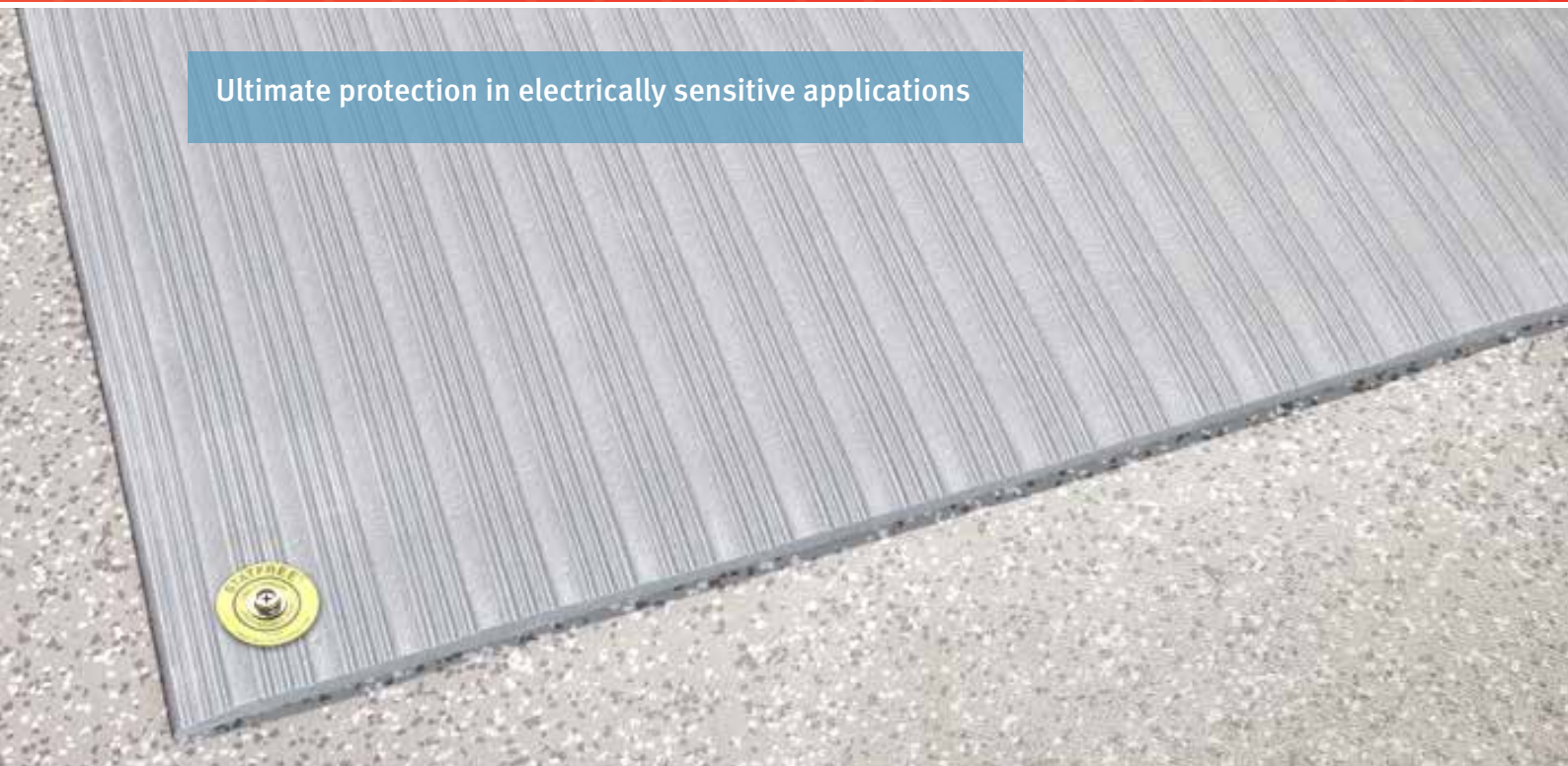
PRODUCT RATING

Performance	● ● ● ● ●
Grip	● ● ● ● ●
Wear	● ● ● ● ●



SOFT STEP ANTI-STATIC ESD

Ultimate protection in electrically sensitive applications

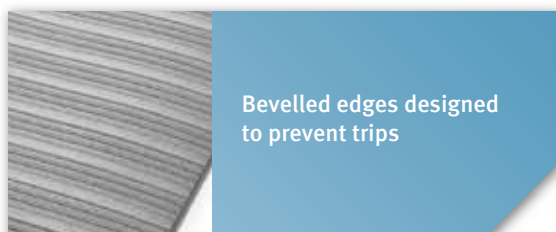


FEATURES

- Economical, anti-static matting for static sensitive areas.
- Easily adapted to suit almost any area.
- Bevelled edges designed to prevent trips – yellow border also available.
- Designed to protect operators and workers from static build up.
- Effectively reduces fatigue from prolonged standing.
- Grounded via a 10 mm stud fitted to the mat – maximum performance is guaranteed when used in conjunction with the floor mat grounding wire (see accessories section on page 40).

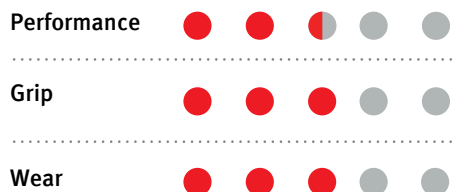
SPECIFICATIONS

Warranty	One year limited warranty
Sizes	Standard 0.9 m x 1.5 m Runner 0.9 m x any length
Colour	Standard grey
Actual Resistivity	$1 \times 10^5 \Omega$
Applications	Industry and General Manufacturing, Commercial and other static sensitive areas



Bevelled edges designed to prevent trips

PRODUCT RATING



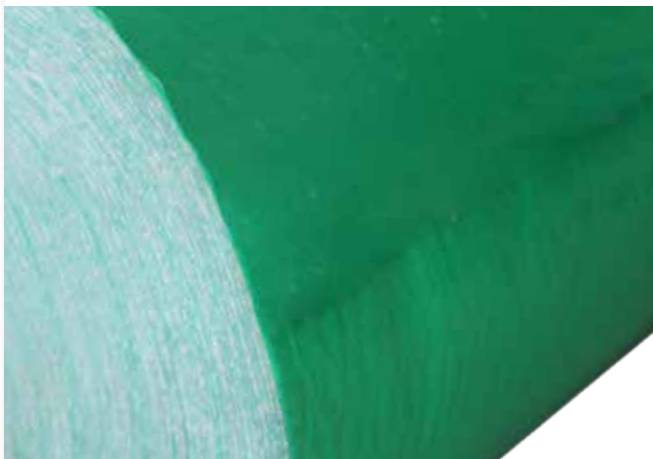
MATTING & UNDERFOOT ACCESSORIES

Work Well Mats has for some years supplied a selection of accessories and ancillary items for our underfoot products, but we can offer more.

With a selection of products designed to compliment matting, this range has many newcomers with options for both permanent and temporary application.



RUG LOCK



FEATURES

- Designed to stop rubber matting and carpet matting from slipping on carpet or concrete.
- Lengths cut to suit.
- Special sticky surface can be removed and replaced for vacuuming etc.

SPECIFICATIONS

Sizes	0.9 m runner
-------	--------------



CLEANING PRODUCTS



BRUSHES

Short Handle

Stiff Scrub

These quality scrubbing brushes make cleaning those nooks and crannies effortless and still guarantee you a cleaner result.



BROOMS

Extra Durable

Aluminium Handle

This long handled stiff bristled broom takes the back breaking effort out of cleaning mats.



VANISH

5 Litre

20 Litre

Heavy-duty cleaner makes cleaning ultra greasy matting a breeze.

Work Well Mats is a registered brand of Treadwell Group Pty Ltd. All Pictures and information are supplied as a guide only. The complete range of Work Well Mats products are developed, refined, made to meet and exceed stringent specifications for the worldwide market.

Important Note: Sales of products are subject to our Terms and Conditions which are available upon request. All specifications, colours and photos are a guide only and are subject to change without notice. Please ring to confirm details. Mats used in wet greasy applications may require scheduled cleaning to ensure optimum performance.

Work Well Mats

P 1800 246 800

F 1300 763 521

E sales@wwm.net.au

wwm.net.au